

Technology and Communications Department Update / Actualización del Departamento de Tecnología y Comunicaciones



May 16, 2023 / 16 de mayo 2023

EMBRACE EMPOWER EXCEL *Each Child Each Day*



Technology Services: Obsolescence Plan

2023-24 Hardware Upgrades

- New handset phones for offices and classrooms
- Security Camera System (upgrades)





Technology Services: Cybersecurity

- Collaborated with Secured Halo to review and revise our Incident Response Plan.
- Onboarding the Center of Internet Security/Crowdstrike for Managed Detection and Response.
- Updating our backup disaster recovery to include replication to ensure continuity of operational services.



Instructional Technology: Roadmap

ISTE Standards Teacher Professional Development

- Advocate for continued student personal learning plans

Development and Implementation of a D76 Responsible Usage Policy

- Instructional Technology Committee Focus





Communications: Noteworthy Metrics

Mass Communications:

Monthly Average Emails: 42

Monthly Average Text Messages: 17

Social Media Followers:

Facebook: 706

Twitter: 629

Instagram: 517

YouTube: 224

Website Presence:

Average Monthly Page Views: 16,160

Parent University:

Average Attendees: 12

Average YouTube Views: 60+

PowerSchool Parent Portal:

Average Monthly Sign Ins

Diamond Lake School: 48

West Oak Intermediate School: 394

West Oak Middle School: 747

Learning Management Systems:

Seesaw (average monthly items) : 8,103

Google Classroom (average monthly posts) : 2,120

Users

New Users

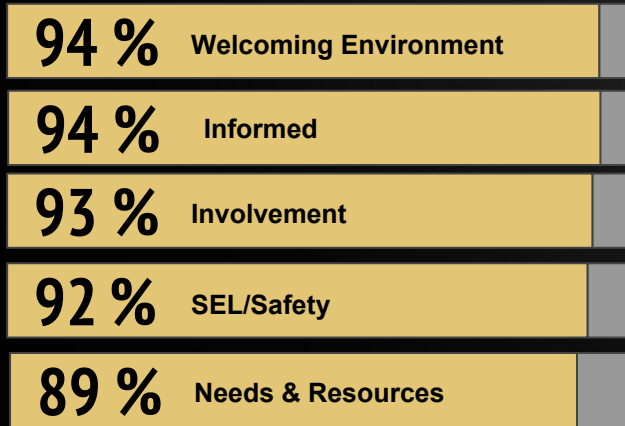
Sessions

Page Views



Communications: Continuous Feedback

Parent Engagement



93 % Overall Satisfaction

Culture and Climate



98 % Overall Satisfaction



Questions & Feedback

Preguntas y Comentarios

Student Services Update /
Actualización de Servicios
Estudiantiles





Student Services Department Improvements

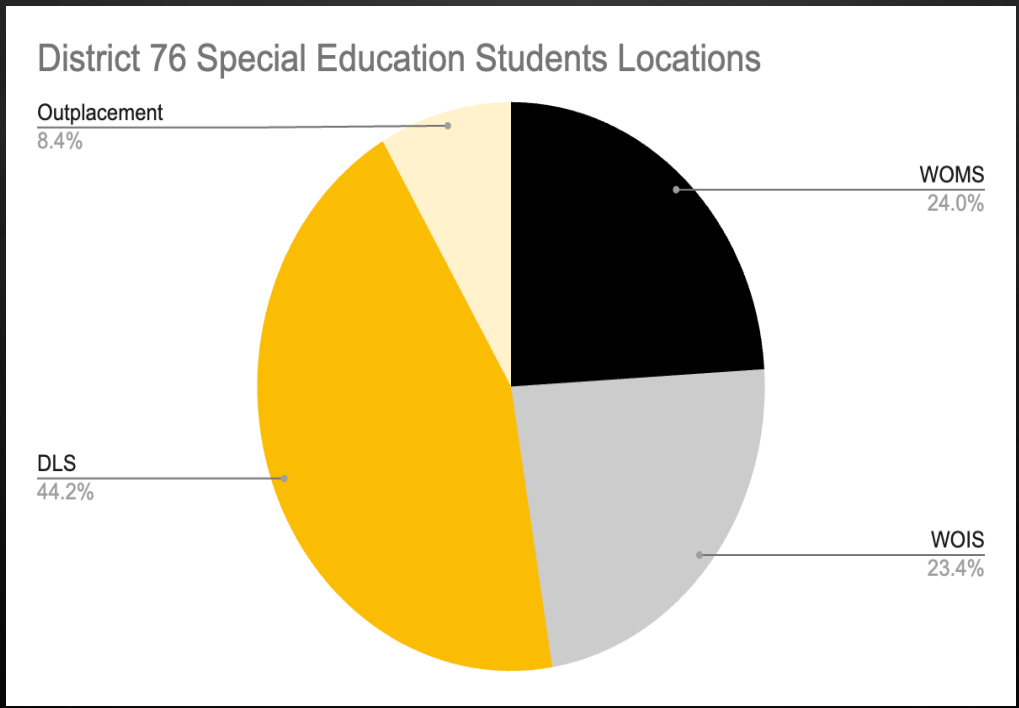
- **Curriculum Based Measures**
 - Star
 - EasyCBM
- **Behavioral Consultant Support**
- **Full Implementation of Universal SEL Screener-DESSA**
 - Screener for social emotional competencies
- **Implementation of Tier 3 SEL Curriculum**
 - Centervention
- **Special Education Task Force**
 - SPED Guidebook
- **Learning Associate Trainings**
- **Addition of Self-contained class at DLS**
- **IEP Compliance Professional Development**



Current Special Education Information

Current Number of IEP's

- **Total: 154**
- **In District : 141**
- **Out Placement: 13**





Diamond Lake School District 76
Embrace Empower Excel Each Child Each Day

Data Collection /
Recopilación de
Datos



Star Curriculum Based Measures

- **STAR Curriculum Based Measures:**
 - Measures of student achievement and growth
 - Short and simple assessments in target content area
 - Scores are nationally normed
- **Special Education Department Implemented CBM's in October 2022**
 - Case managers selected measures based on student's IEP goals
 - Students assessed approximately every 2 weeks
 - Reviewed bi-weekly at Sped Team Meetings
- **90% of Students Made Growth on CBM's**



Data Collection for Behaviors

FBA and BIP's Measure Growth on Behavior

- **Functional Behavioral Assessment :**
 - Data collected on specific behavior
 - Duration
 - Frequency
 - Intensity
 - Hypothesis of why behavior occurs
- **Behavior Intervention Plan:**
 - Identification of Target Behavior
 - Plan to decrease Target Behavior
 - IEP Goal for reduction in Target Behavior



Behavioral Data

Grade Level Bands	Total Number of Students with BIP	Number of Students with Growth on BIP IEP Goal	Percentage of Students That Grew
Pre-K-2nd	3	3	100%
3rd-5th	7	7	100%
6th-8th	4	4	100%



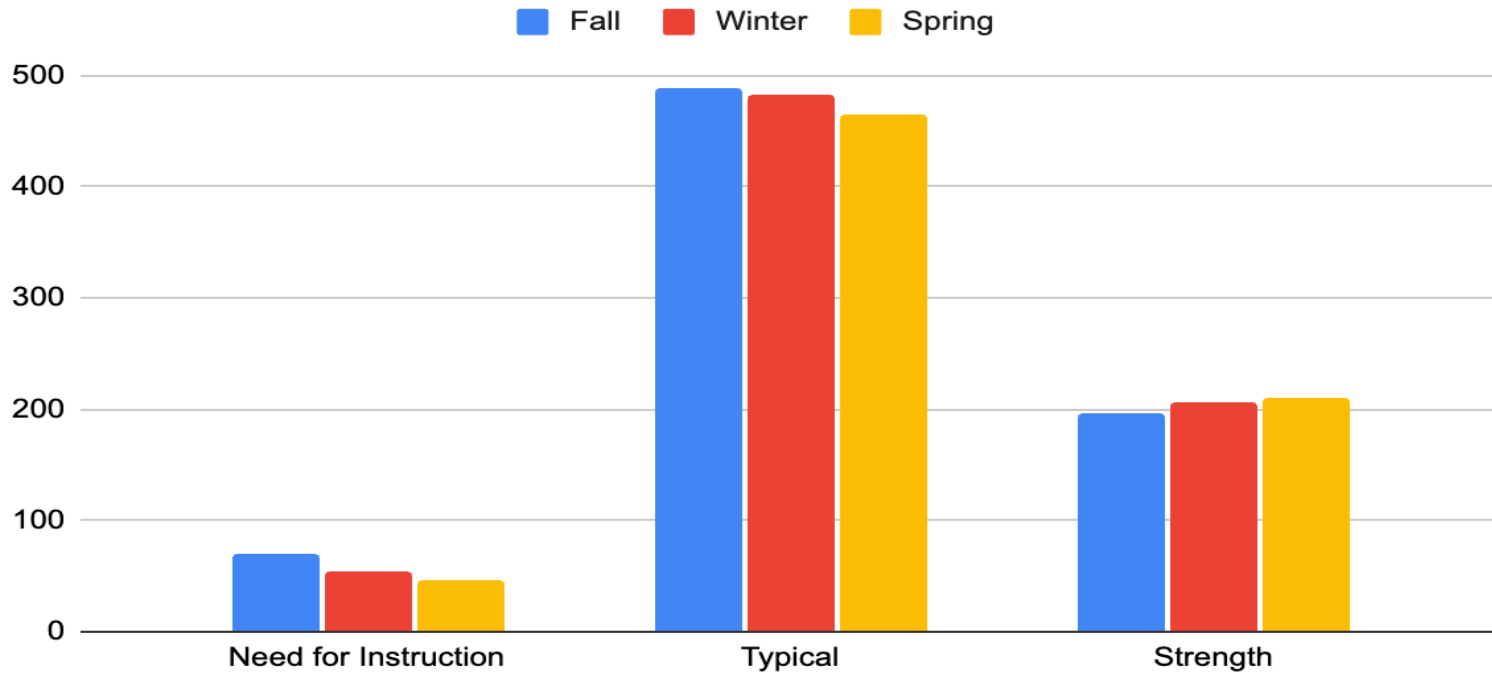
DESSA

- **Devereux Student Strength Assessment (DESSA):**
 - SEL Universal screener and progress monitoring
 - For students K-8th grade
 - Completed by teacher
- **Two Step Process:**
 - DESSA Mini for ALL students
 - 8 questions
 - DESSA for ALL students
 - 72 questions



DESSA- District Comparison / Comparación de Distritos

2022-23 District DESSA Data





Diamond Lake School District 76
Embrace Empower Excel Each Child Each Day

Increased
Inclusionary
Practices / Aumento
de las Prácticas de
Inclusión



Increasing Inclusion

- **Developed IEP Minutes Guidelines to:**
 - Promote Continuity
 - Increase student time in general education class(s)
 - Increase time and social opportunities with peers
 - Increase data informed decisions to support educational needs
- **Reviewed and Adapted District Wide Services**
 - Developed Blended Pre-k Class
 - Increased inclusion services for Resource Teachers
 - Developed Self-contained K-2 class
 - Tailored Instructional Middle School Classes
 - Continued Co-teaching at WOMS

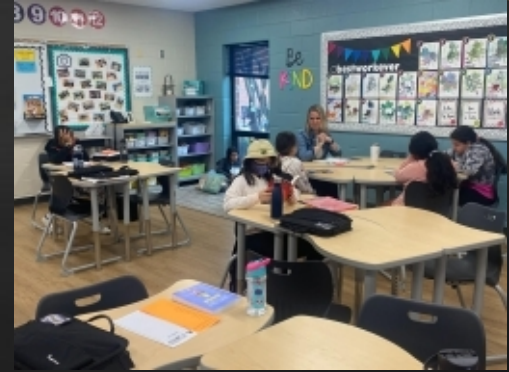




Inclusion Services

Students IEP minutes are:

- Inside the general education classroom
- Taught by Special Education Teacher
- Specialized based on Student Needs
- Content Areas: Reading, Math, Writing, Functional



Benefits:

- Consistency of routines and schedules
- Peer relationships, interactions, and models
- Decreased number of transitions
- Increased instructional time





Resource Minutes

Students IEP minutes are:

- Inside the Special Education classroom
- Taught by Special Education Teacher
- Specialized based on Student Needs
- Content Areas: Reading, Math, Writing, Functional



Benefits:

- Direct Instruction
- Small groups
- Decreased Distractions
- Increased student focus
- Instruction based on individual needs





Blended Preschool Classes

- **Little Diamonds Early Learning Program:**
 - 2 Blended Classes
 - Certified teacher
 - Special Education and General Education Certified
 - Student Population
 - General Education and Special Education Students
- **Benefits:**
 - Full preschool class in with general education peers
 - Peer role models
 - Incidental learning
 - Teaching diversity and acceptance to ALL





Self-Contained

- **Self-Contained Classroom:**

- Certified special education teacher
 - Learning associate(s) to help support students
- Student population
 - Mixed grade levels
 - Inclusion with grade-level peers within specials, lunch, and recess

- **Benefits:**

- Allowed for stronger and more intense/direct instruction in SEL needs (Second Step and The Zones of Regulation)
- Curriculum was modified and adapted to fit the academic needs of students, allowing them to make progress while feeling confident and successful
- Students were able to create meaningful connections and relationships with other students and teachers





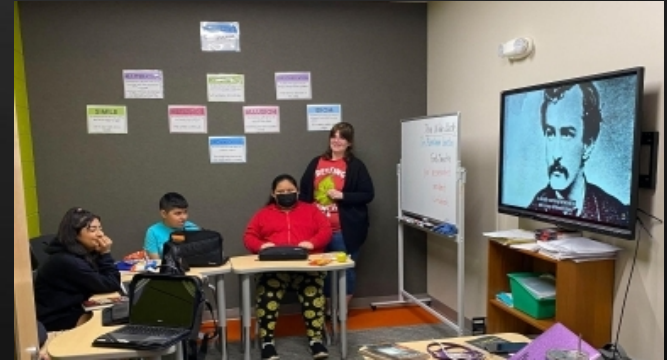
Instructional Classes at WOMS

Instructional Classroom:

- Certified Special Education Teacher
- Small group instruction
- Teachers follow the general education curriculum

Benefits:

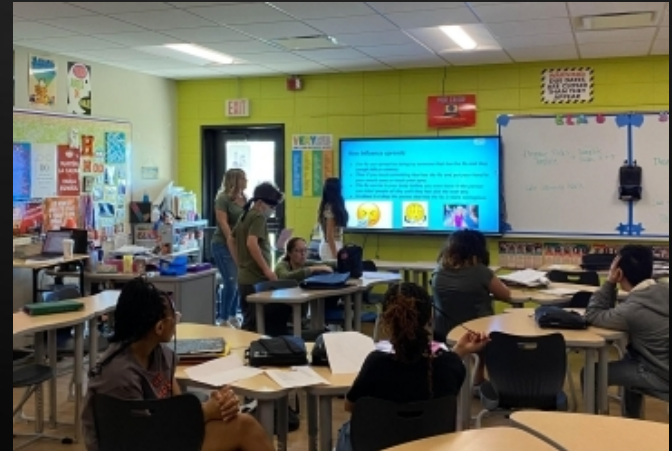
- Low stress environment
- Increased Student Participation
- Pacing follows students instructional needs
- Highly Structured
- Built in Behavior Management system





Co-Teaching at Middle School

- **Special Education and General Education Teachers collaborate to:**
 - Teach lessons as a team
 - Instruct General and Special Education students in the class
 - Adapt teaching to meet needs of ALL students
 - Provide differentiated instruction
- **Benefits:**
 - Improved academic performance
 - Increased support from teachers
 - Strategies and study skills
 - Increased emphasis on social skills
 - Improved classroom communities





Diamond Lake School District 76
Embrace Empower Excel Each Child Each Day

Next Steps /
Próximos Pasos



Looking Ahead

- **Focus on Trauma Based Practices**
 - Professional Developments
- **Special Education Compliance**
 - Review SPED Guidebook
- **Focus on Inclusion and meeting student needs**
 - Co-teaching
 - Continue to increase special teacher support in general education
 - Addition of self-contained classroom at WOIS

 - Addition of Instructional Social Studies
- **Social Emotional Learning**
 - Implement Calm Classroom
 - Continue with Centervention
 - Continue with for DESSA



Questions & Feedback

Preguntas y Comentarios